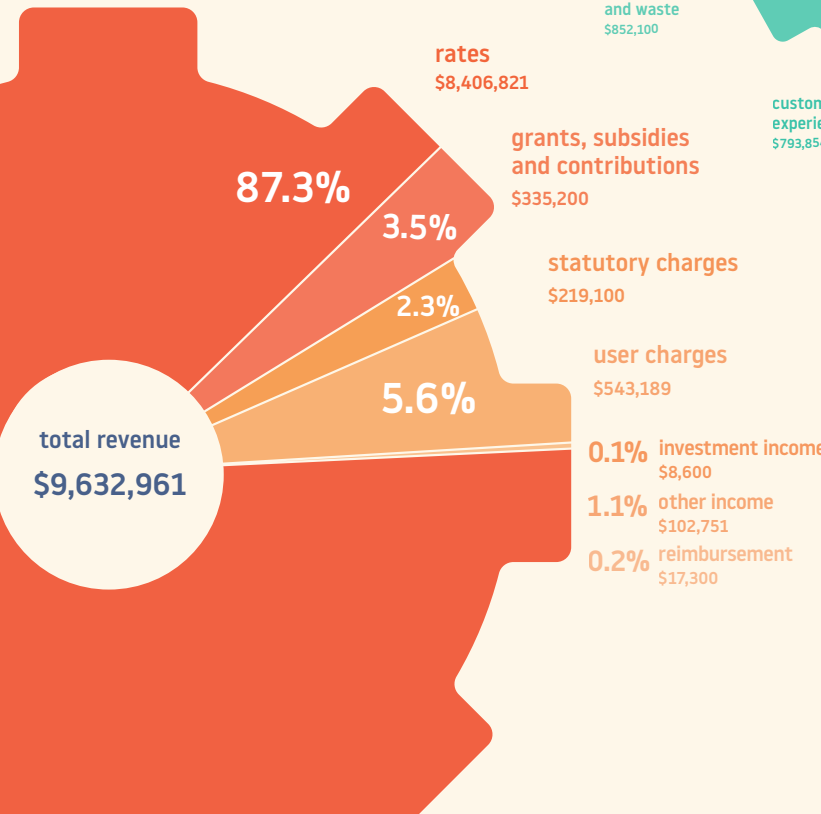


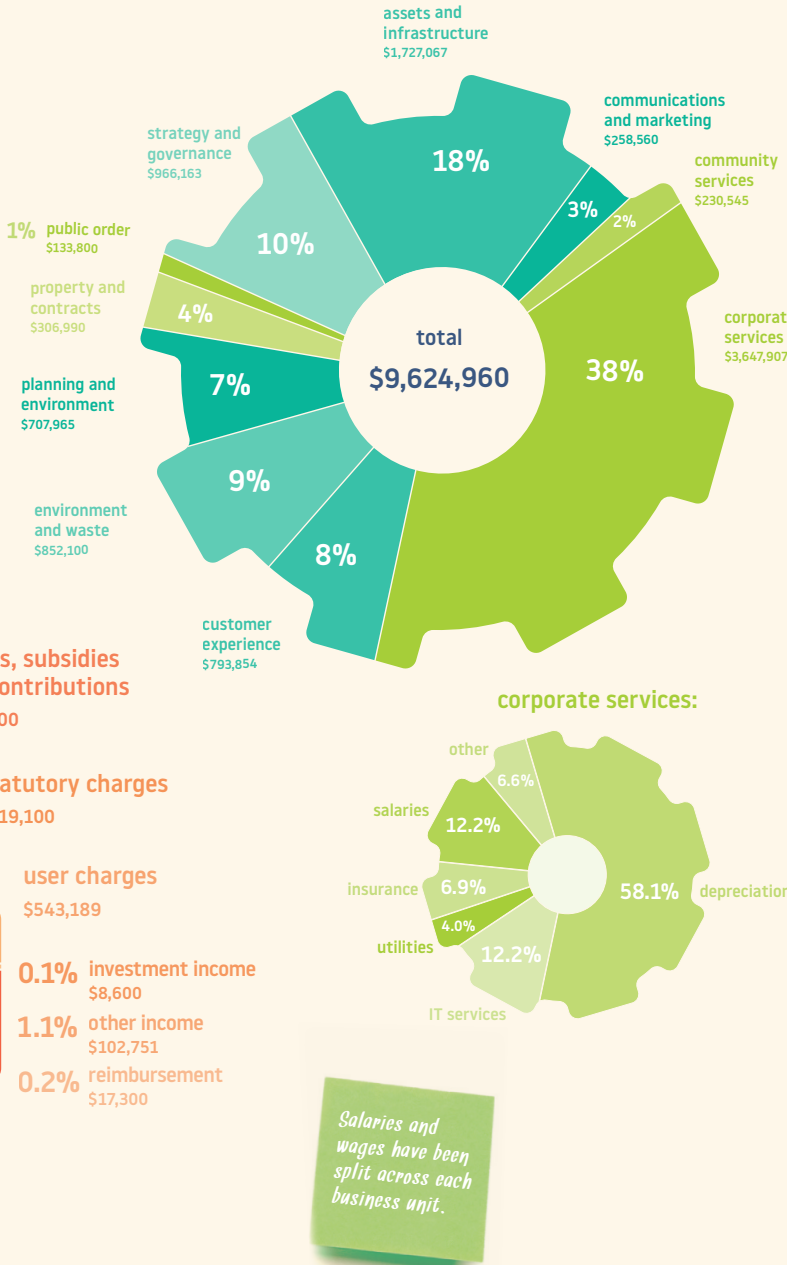
revenue

estimated revenue by category:



expenditure

estimated operating and capital expenditure (including depreciation):



rates

The table below shows a comparison of residential rates.

Burnside	0.0021500
Norwood, Payneham & St Peters	0.0022187
Walkerville	0.0023456
Unley	0.002459
Campbelltown	0.00300049
Prospect	0.0030664

property appreciation

residential	properties assessed		average capital value		increase
	2016-17	2017-18	2016-17	2017-18	
Gilberton	848	853	671,020	740,053	10.29%
Medindie	423	423	1,568,735	1,583,144	0.92%
Walkerville	1,385	1,382	742,636	785,140	5.72%
Vale Park	987	993	605,233	663,902	9.69%
	3,643	3,651	784,660	834,087	6.30%

valuations on your property are made by the Valuer General, not Council.

If your property was valued at \$500,000 in 2017/18 and does not increase in 2018/19, your rates will decrease by \$48 in 2018/19.

If your property was valued at \$1,000,000 in 2017/18 and does not increase in 2018/19, your rates will decrease by \$97 in 2018/19.

capital value and properties

capital value and properties	number of residential properties	percentage of properties
up to \$500,000	1,121	30.7%
\$500,000 – \$750,000	878	24.0%
\$750,000 – \$1,000,000	690	18.9%
\$1,000,000 – \$1,250,000	395	10.8%
\$1,250,000 +	567	15.6%
total	3,651	

payment of rates

- 1st payment: 11 September 2018
- 2nd payment: 11 December 2018
- 3rd payment: 11 March 2019
- 4th payment: 11 June 2019

Rates may be paid through:

- BPay Service
- telephone **1300 276 468** using Mastercard or Visa card
- Council's website using Mastercard or Visa card
- in person at Council offices
- via the Community information kiosk located at Woolworths Shopping Centre, Walkerville Terrace, Walkerville, 5081
- cheque, money order, cash, EFTPOS, Mastercard or Visa card facilities are available for payments (American Express and Diners Club cards are not accepted)
- post addressed to the Town of Walkerville PO Box 55, Walkerville SA 5081
- Australia Post.

2014–2018 elected members



Ray Grigg (Mayor)
M 0466 396 670
rgrigg@walkerville.sa.gov.au



Elizabeth Fricker (Deputy Mayor)
M 0418 826 533
efricker@walkerville.sa.gov.au



MaryLou Bishop
M 0417 017 577
mbishop@walkerville.sa.gov.au



Gianni Busato
M 0447 863 418
gbusato@walkerville.sa.gov.au



Margaret Graham-King
M 0404 063 380
mgramham-king@walkerville.sa.gov.au



David Shetliffe
M 0414 631 442
dshetliffe@walkerville.sa.gov.au



Graham Webster
M 0439 455 006
gwebster@walkerville.sa.gov.au



David Whiting
M 0488 916 650
dwhiting@walkerville.sa.gov.au



James Williams
M 0408 446 457
jwilliams@walkerville.sa.gov.au



WALKERVILLE

Front cover courtesy of the Local Government Association of South Australia.

Town of Walkerville
66 Walkerville Tce, Gilberton SA 5081
Tel 08 8342 7100 (24 hours)
walkerville@walkerville.sa.gov.au
@walkerville5081
@TownofWalkerville
@WalkervilleLibrary
walkerville.sa.gov.au

Photos: Simon Casson



2018/19 Annual business plan summary

-council-
PART
-of your-
EVERY DAY.

Every year, your elected representatives adopt an annual business plan and budget which sets out where – and how – your rates are being invested.

Every four years, the community elects their Elected Members.

How you vote has a direct impact on Council services in your community. To keep in touch with key dates for nominating and voting go to www.walkerville.sa.gov.au

- make a difference -
COUNCIL ELECTIONS
-2018-



VOTE

must be received before 5pm.
Friday 9 November 2018

from the Mayor of Walkerville

This will be the final budget to be delivered by this Council prior to the Local Government elections in November 2018.

At the end of our four-year term, I believe our record for delivering great outcomes for our ratepayers stands for itself.

The 2018/19 Annual business plan delivers:

- an average residential rate increase of no more than 2.49%
- an average non-residential rate increase of no more than 2.17%
- total income of \$9,632,961
- total expenditure of \$9,624,960
- total expenditure allocated to capital works of \$4,105,000
- a slight operating surplus.

In 2018/19, non-residential properties (i.e. businesses) will have a rate increase in comparison to previous years. The rationale is to ensure a more equitable financial impost for businesses and residents.

In proposing this change, we were mindful of our strategic imperative to support business activation in our Council area. Safety is an integral element to business activation. To offset the increase to commercial property owners, Council has allocated an additional \$10,000 towards public safety measures on Walkerville Terrace and we have introduced a new seed-funding scheme to help shopfront businesses to purchase CCTV cameras.

Our recent Town wide survey showed a high satisfaction rating for living in the Town of Walkerville. 91% of residents who took part in the survey responded that they were very satisfied or satisfied with living here.

That 91% satisfaction rating doesn't just happen without a plan. During the last four budget cycles, Council has strategically invested and focused attention on these priority areas with Townwide beautification programs, increased traffic control mechanisms and significant road and footpath upgrades.

In this context, where - and how - we direct funds and select projects has a direct correlation to the wellbeing and satisfaction of people in our community. For this reason, I have always encouraged and appreciated participation in the public consultation process and I thank everyone who provided feedback this time around.

Raymond (Ray) Grigg

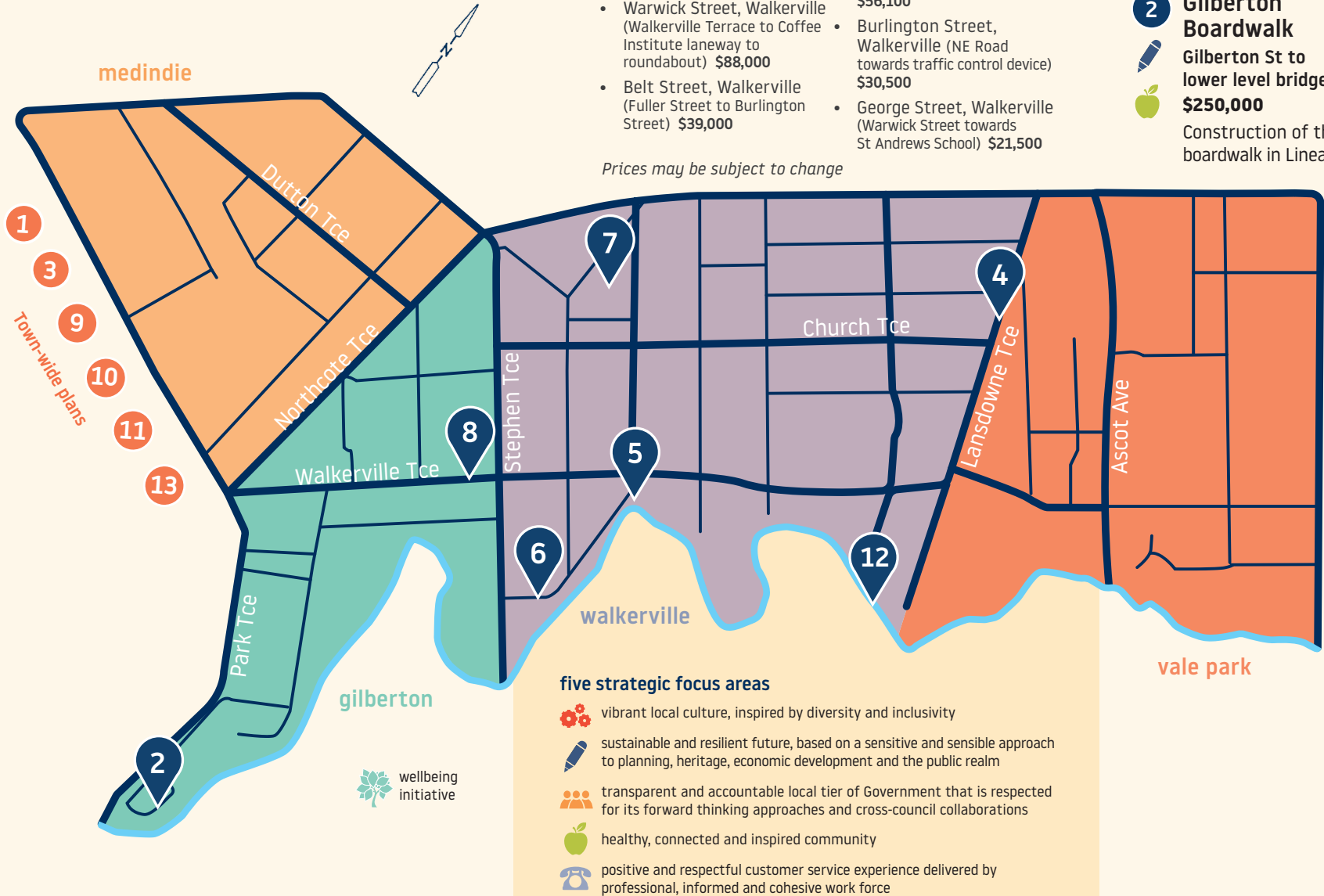
Mayor of Walkerville



Council's 2018/19 Annual business plan was formally endorsed by Council on the 16 July 2018 as per resolution CNC 05/18-19. The Annual Business Plan was open for public consultation between 22 May – 29 June 2018 and nine written submissions were received.

a plan with purpose...

See how the *2018/19 Annual business plan* is realising our strategic vision as outlined in *2016-2020 Living in the Town of Walkerville: a strategic community plan* and *2016-2020 Living Walkerville: wellbeing for every age and stage*.



2 Gilberton Boardwalk
Gilberton St to lower level bridge
\$250,000

Construction of the boardwalk in Linear Park.



3 Tennis courts
Townwide
\$30,000

Selected tennis courts will be improved with restringing and fencing.

6 Cluny Avenue stairs
Walkerville
\$90,000

Improved stair access to Linear Park.



8 Public safety
Walkerville Terrace, Walkerville
\$10,000

Enhanced safety measures for pedestrians, cyclists and motorists along Walkerville Terrace.



7 Walkerville Wesleyan Cemetery
Smith Street, Walkerville
\$50,000

Ongoing restoration work of the heritage stone wall.



9 Gate fees
Townwide
\$70,000

Additional costs as a result of China's National Sword Policy.



10 Integrated open space strategy
Townwide
\$50,000

Engaging an expert consultant to design an integrated plan for our open spaces which includes: public art, signage and historical markers.



11 Seed funding, CCTV
local shopfront businesses
\$5,000

Funding to assist local shopfront businesses to purchase CCTV cameras.



12 Linear Park lighting
Linear Park
\$250,000

Stage 2 of light replacement program which will include design features to prevent/minimise damage from extreme weather events.



13 Townwide annual footpath program
\$116,000

Section of Ilford Street, Vale Park and Victoria Terrace, Walkerville (near The Watson).

** Council had previously earmarked \$675,000 towards this project, however, these funds were contingent on matching funds from State or Federal Government. Whilst Council was not successful in securing matching funds it has decided to move forward on a more moderate scale. Subject to final design and endorsement.*